



ME

Extraction arm for laboratory environments with clean design and market-leading low pressure drop



CAPT-AIR®

8001 Rue Larrey, Anjou, QC, Canada, H1J 2L4
514-273-4331 • info@capt-air.com • www.capt-air.com



ATEX
COMPATIBLE

MOVEX
PURE ADVANTAGE

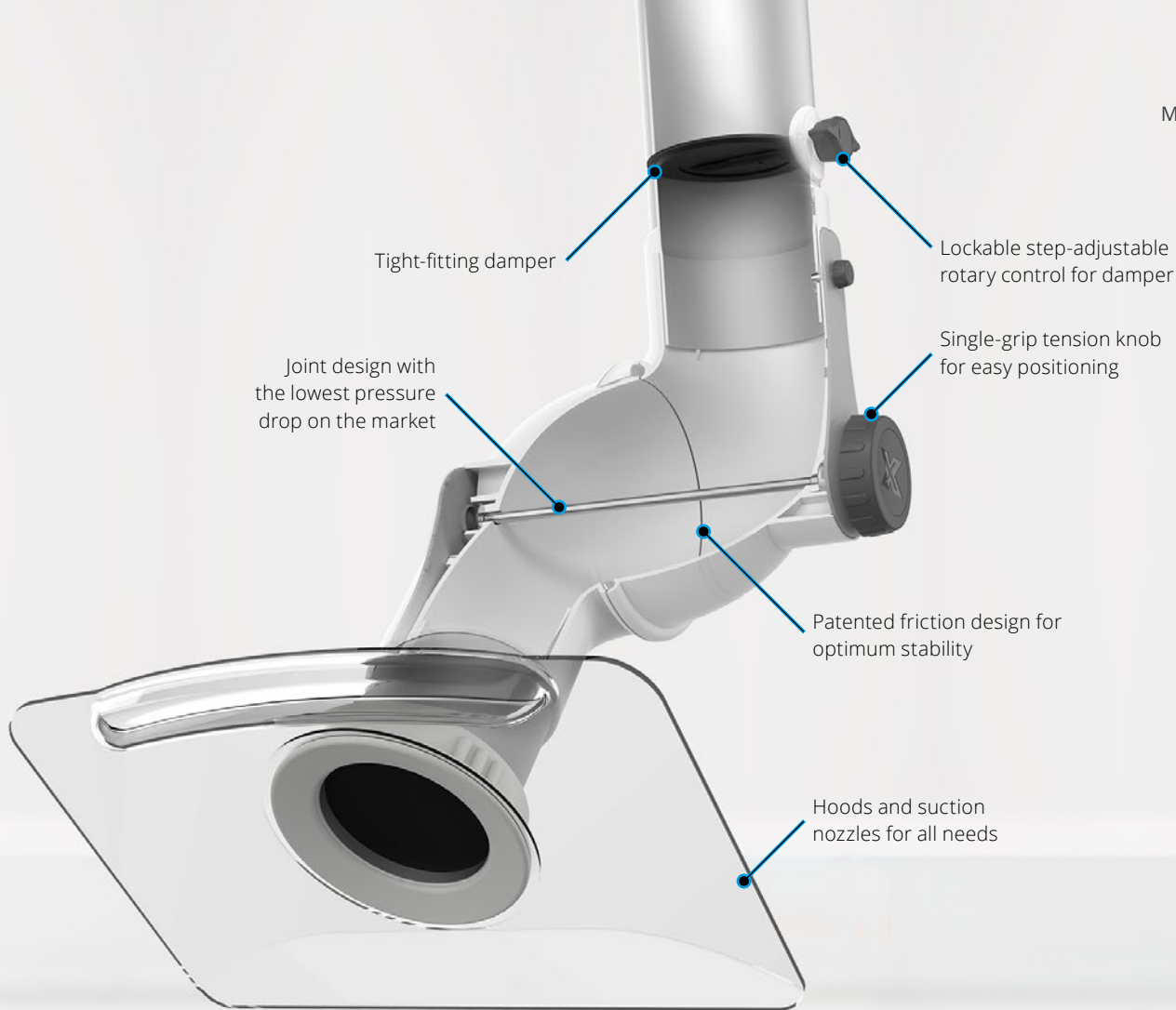


With its optimal design, **MOVEX ME** has many valuable advantages:

- Market-leading low pressure drop
- Energy-saving design
- Flexible and positionally stable
- Tight-fitting damper
- Low noise level
- Low risk of disruptive noise
- Easy to combine with other extractors in the same system

Optimal design with low pressure drop offers many advantages

The unique design of the **MOVEX ME** extractor joint structure combines maximum flexibility with a low pressure drop. ME is the optimal local extractor for all types of laboratory environments, hair salons and light industrial applications, such as soldering.



Well thought through and proven design for optimal function

Patented friction design

MOVEX ME's patented friction design gives a positionally stable arm with smooth and flexible function and a market-leading low pressure drop.

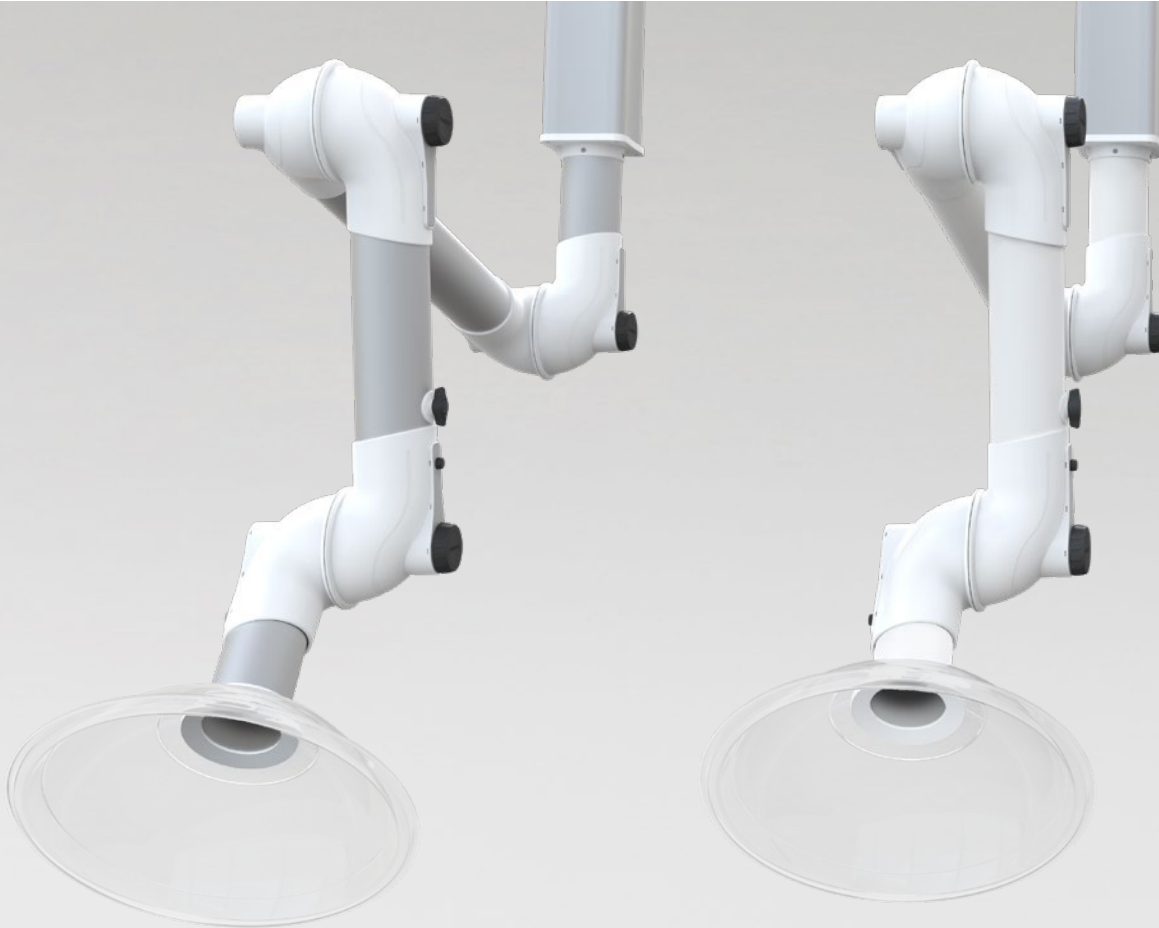
User friendly

MOVEX ME is very user friendly and can also be completely folded away from the work area when necessary. The model, which is continuously redesigned and updated, has proven longevity with components built to last.

Hoods and brackets

The ME series has a wide range of hoods and brackets. This gives great flexibility in terms of how the local extractor can be mounted and used, regardless of the room conditions or the nature of the work.

One arm. Endless options.



ME **STD**

Suitable for evacuating most types of airborne contaminants, e.g. in laboratories, schools, hospitals, the pharmaceutical industry, hair salons and light industrial applications.

ME STD has polypropylene joints and thin-wall anodized aluminum tubes.

Available in the dimensions $\text{Ø}2/3/4''$.

ME **PP**

Used primarily for evacuating very corrosive airborne contaminants in high concentrations, e.g. in certain laboratories and in the pharmaceutical and chemical industries.

ME PP has polypropylene joints and tubes. All metal parts that come into contact with the airflow are made of stainless steel. Ceiling bracket MTI for ME PP is available with internal epoxy coating for higher corrosion resistance for lengths up to 50".

Available in the dimensions $\text{Ø}3/4''$.

Choose MOVEX ME for the best combination of accessories for every situation, enabling you to create the optimal local extractor for evacuating hazardous airborne gases and particles.



ME ESD



Suitable for evacuating airborne contaminants in environments where there is a need to avoid the risk of spark formation and where products need to be ESD-certified for use, e.g. the electronics industry.

Conductive polypropylene joints and conductive polypropylene (Ø75) or aluminum (Ø50) tubes with earth cables make the entire extractor electrically conductive.

ME ESD is type approved according to EN 61340-5-1.

Available in the dimensions Ø2/3".

ME ATEX



Suitable for evacuating airborne contaminants in ATEX-classified environments, e.g. in laboratories, the chemical and petrochemical industries, gas distribution, and the paint and pharmaceutical industries.

Conductive polypropylene joints and tubes. All metal parts in contact with the airflow are made of stainless steel. All load-bearing metal parts are painted with special conductive paint. The product complies with ATEX Directive 2014/34/EU category 2 for gases and dust.

Available in the dimensions Ø3/4".



What is **your** need?

Three dimensions and three standard brackets for different needs and applications

MOVEX ME is available in the dimensions $\text{Ø}2/3/4''$, in lengths between 25"-104". Ceiling/wall/table brackets are available as standard, with ceiling brackets functioning as an exhaust duct. ME facilitates many different types of needs, both in terms of use and installation. For stylish and functional installations, there are extension kits and cover plates as well as a wide range of hoods and suction nozzles. ME is the market's most complete local extractor.



Optimal capture

For optimal use of the local extractor, it is important to use the flexibility of the extractor to get as close to the contaminant as possible. A good rule of thumb is a distance of 2-3 times the diameter of the local extractor tube. Then the local extractor (at the recommended airflow) gives a continued high efficiency even when there are disruptions in the environment.

Recommended airflow

ME 50

Suitable for work environments and work requiring relatively small airflows.

Activity	Recommended airflow	
Hair salons	40 cfm	18 l/s
Laboratories	30-45 cfm	15-21 l/s
Schools	30-45 cfm	15-21 l/s

ME 75

A standard solution suitable for most work environments. Suitable where needs vary.

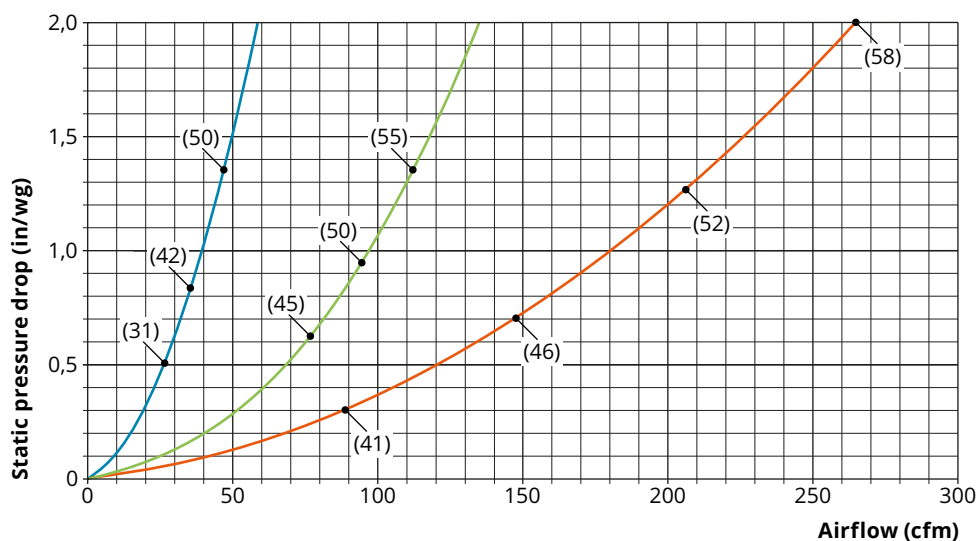
Activity	Recommended airflow	
Laboratories	70-85 cfm	33-42 l/s
Schools	70-85 cfm	33-42 l/s

ME 100

Suitable for work environments and work requiring relatively large airflows.

Activity	Recommended airflow	
Laboratories	120-180 cfm	55-80 l/s
Light industry	180 cfm	80 l/s

Pressure drop



Dimensions (Ø)

- ME-50
 - ME-75
 - ME-100
- (xx) db(A)

Measuring methods

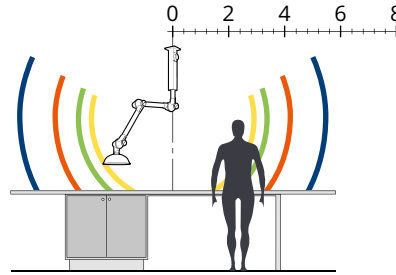
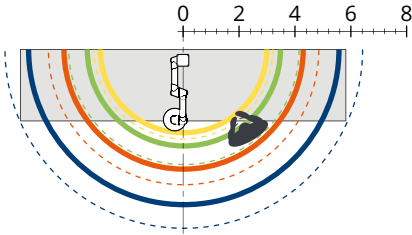
Static pressure drop is measured in accordance with ISO standard 5167-1. Noise level is measured in accordance with ISO standard 3743. Reported sound data refers to sound pressure level.

Support for design

Reach (ft)

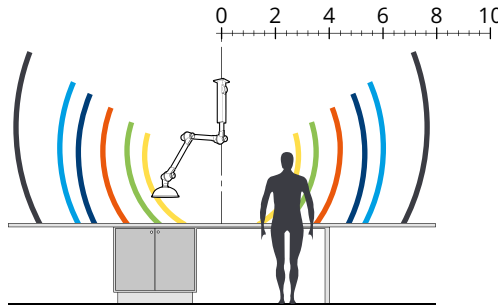
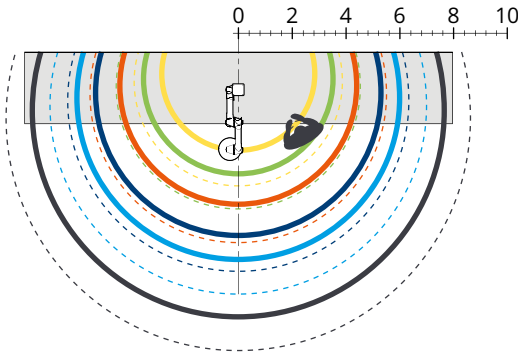
At the recommended mounting height.

ME 50/75



- ME 1000
- ME 1300
- ME 1500
- ME 2000
- Max. working radius
- Max. radius

ME 100



- ME 1150
- ME 1350
- ME 1650
- ME 1900
- ME 2100
- ME 2650
- Max. working radius
- Max. radius

Version			Recommended mounting height (in)	Recommended side displacement (in)
Ø50	Ø75	Ø100		
MET 1000	MET 1000		75	14
		MET 1150	75	18
MET 1300	MET 1300	MET 1350	83	22
MET 1500	MET 1500	MET 1650	87	26
	MET 2000	MET 1900	95	30
		MET 2100	95	32
		MET 2650	95	40

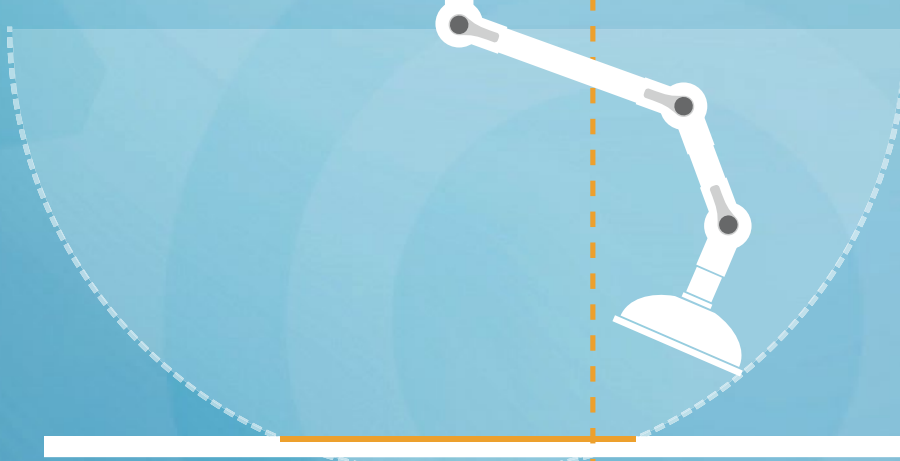
Mounting height* and side displacement

To optimize the reach of the extractor, the following mounting heights and side displacement are recommended relative to the work area.

* Based on a working height of 36".

Design tool and CAD drawings

Support for designing your unit is available at www.movexinc.com. There you will find our reach configurator (Design tool) and CAD drawings for download.

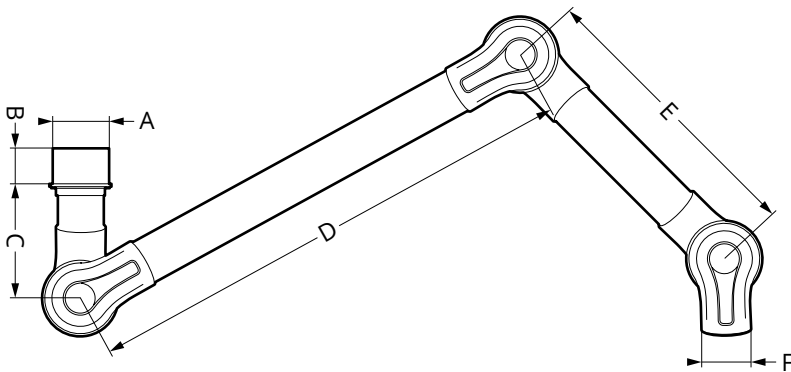


Add box

Version and dimensional drawing

MET (Ceiling/Wall)

With an internal mechanical spring or external gas spring (depending on model), for ceiling and wall mounting. Excluding bracket.



Article	Version				Dimensions (in)							Weight (lb)			
	STD	PP	ESD	ATEX	A	B	C	D	E	F	Lenght	STD	PP	ESD	ATEX
MET 650-50*	●		●		Ø3 7/8	Ø3 1/8	Ø9 13/16	12		Ø1 15/16	25	2.2		2.4	
MET 750-50*	●		●		Ø3 7/8	Ø3 1/8	Ø9 13/16	18		Ø1 15/16	30	2.4		2.6	
MET 1000-50	●		●		Ø3 7/8	Ø3 1/8	Ø9 13/16	16	12	Ø1 15/16	39	3.3		3.5	
MET 1300-50	●		●		Ø3 7/8	Ø3 1/8	Ø9 13/16	22	18	Ø1 15/16	51	3.5		4.0	
MET 1500-50	●		●		Ø3 7/8	Ø3 1/8	Ø9 13/16	30	18	Ø1 15/16	59	4.2		4.2	
MET 1000-75	●	●	●	●	Ø3 7/8	Ø3 1/8	Ø9 13/16	16	12	Ø2 15/16	39	4.6	4.0	5.1	5.1
MET 1300-75	●	●	●	●	Ø3 7/8	Ø3 1/8	Ø9 13/16	22	18	Ø2 15/16	51	5.5	4.4	5.5	5.5
MET 1500-75	●	●	●	●	Ø3 7/8	Ø3 1/8	Ø9 13/16	30	18	Ø2 15/16	59	6.0	4.9	6.0	6.0
MET 2000-75	●				Ø3 7/8	Ø3 1/8	Ø9 13/16	39	26	Ø2 15/16	79	7.1			
METS 1500-75**	●	●	●	●	Ø3 7/8	Ø3 1/8	Ø9 13/16	30	18	Ø2 15/16	59	7.3	6.2	7.3	3,3
METS 2000-75**	●	●	●	●	Ø3 7/8	Ø3 1/8	Ø9 13/16	39	26	Ø2 15/16	79	8.2	6.6	8.2	8.2
MET 1150-100	●	●		●	Ø4 15/16	Ø5 5/16	Ø10 1/4	18	14	Ø3 15/16	45	9.9	8.8		9.5
MET 1350-100	●	●		●	Ø4 15/16	Ø5 5/16	Ø10 1/4	22	18	Ø3 15/16	53	10.4	9.3		10.1
MET 1650-100**	●	●		●	Ø4 15/16	Ø5 5/16	Ø10 1/4	30	22	Ø3 15/16	65	12.8	11.0		11.9
MET 1900-100**	●	●		●	Ø4 15/16	Ø5 5/16	Ø10 1/4	39	22	Ø3 15/16	75	13.7	11.5		12.3
MET 2100-100***	●	●		●	Ø4 15/16	Ø5 5/16	Ø10 1/4	39	30	Ø3 15/16	83	15.0	12.6		13.7
MET 2650-100***	●	●		●	Ø4 15/16	Ø5 5/16	Ø10 1/4	51	39	Ø3 15/16	104	16.8	13.7		14.8

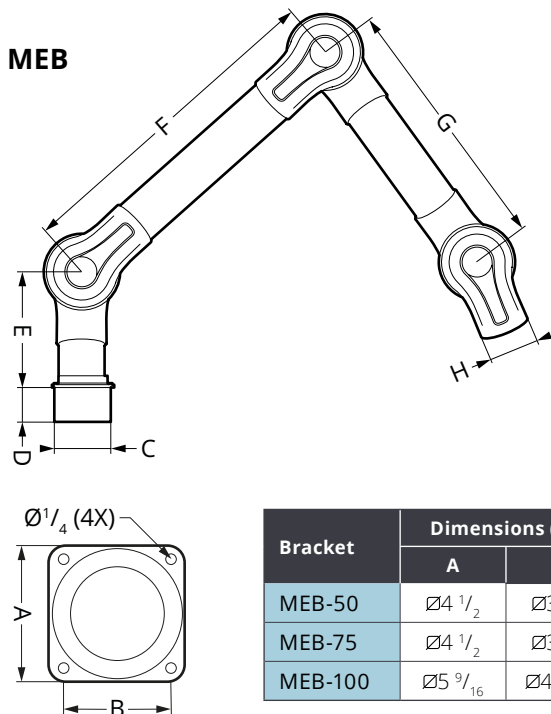
* Two joints.

** Including external gas spring.

*** Including two external gas springs.

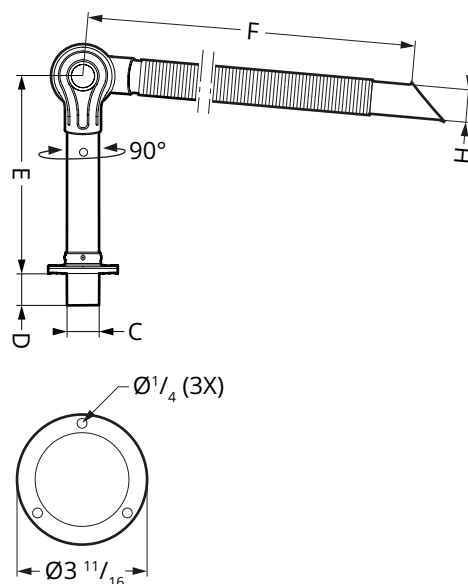
MEB (Table)

With an internal mechanical spring or external gas spring (depending on model), for table mounting.



Bracket	Dimensions (in)	
	A	B
MEB-50	Ø4 1/2	Ø3 5/8
MEB-75	Ø4 1/2	Ø3 5/8
MEB-100	Ø5 9/16	Ø4 11/16

MEBC 700-50ES



Article	Version				Dimensions (in)							Weight (lb)			
	STD	PP	ESD	ATEX	C	D	E	F	G	H	Lenght	STD	PP	ESD	ATEX
MEB 650-50*	●		●	■	Ø3 7/8	Ø3 1/8	Ø9 13/16	12		Ø1 15/16	26	2.2		2.4	■
MEBC 700-50ES**	●		●	■	Ø2 1/16	Ø2 3/8	Ø13 3/4	24		Ø1 15/16	28			2.0	■
MEB 750-50*	●		●	■	Ø3 7/8	Ø3 1/8	Ø9 13/16	18		Ø1 15/16	30	2.4		2.6	■
MEB 1000-50	●		●	■	Ø3 7/8	Ø3 1/8	Ø9 13/16	16	12	Ø1 15/16	39	3.3		3.5	■
MEB 1300-50	●		●	■	Ø3 7/8	Ø3 1/8	Ø9 13/16	22	18	Ø1 15/16	51	3.5		4.0	■
MEB 1500-50	●		●	■	Ø3 7/8	Ø3 1/8	Ø9 13/16	30	18	Ø1 15/16	59	4.2		4.2	■
MEB 1000-75	●	●	●	■	Ø3 7/8	Ø3 1/8	Ø9 13/16	16	12	Ø2 15/16	39	4.6	4.0	5.1	5.1
MEB 1300-75	●	●	●	■	Ø3 7/8	Ø3 1/8	Ø9 13/16	22	18	Ø2 15/16	51	5.5	4.4	5.5	5.5
MEB 1500-75	●	●	●	■	Ø3 7/8	Ø3 1/8	Ø9 13/16	30	18	Ø2 15/16	59	6.0	4.9	6.0	6.0
MEB 1150-100	●	●		■	Ø4 15/16	Ø5 5/16	Ø10 1/4	18	14	Ø3 15/16	45	9.9	8.8		9.5
MEB 1350-100	●	●		■	Ø4 15/16	Ø5 5/16	Ø10 1/4	22	18	Ø3 15/16	53	10.4	9.3		10.1
MEB 1650-100***	●	●		■	Ø4 15/16	Ø5 5/16	Ø10 1/4	30	22	Ø3 15/16	65	12.8	11.0		11.9
MEB 1900-100***	●	●		■	Ø4 15/16	Ø5 5/16	Ø10 1/4	39	22	Ø3 15/16	75	13.7	11.5		12.3

* Two joints.

** One joint with Flexible suction nozzle (MEFS 600-50ES) fitted.

*** Including external gas spring.

Brackets

MOVEX ME's ceiling and wall brackets are designed for maximum stability with a stylish design. The special extruded anodized aluminum profiles have a unique concave design specially adapted to ensure perfect function and professional installation. No joints regardless of length, and great flexibility for special adjustments. The brackets are available in different versions to suit all ME designs.

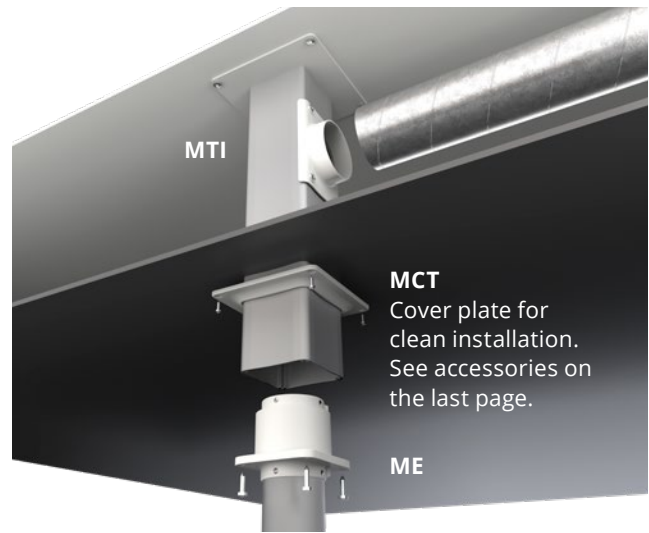
Versions

Standard: Anodized aluminum, powder-coated metal parts (white), polypropylene duct connection.

L (painted externally): Aluminum and metal parts painted externally (white), polypropylene duct connection.

IL (painted internally/externally for greater corrosion resistance): Aluminum and metal parts painted internally and externally (white), polypropylene duct connection. Maximum length for internal coating is 50".

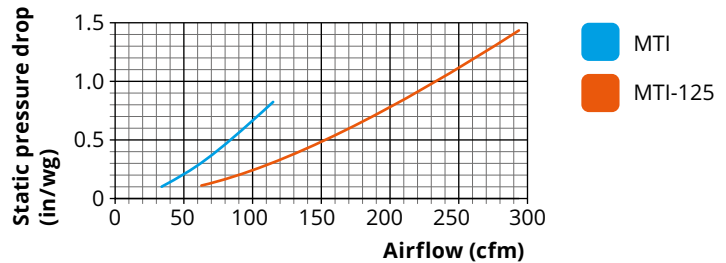
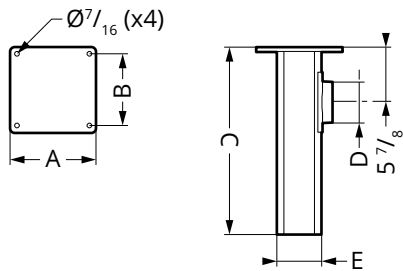
ESD (ES): Anodized aluminum, powder-coated metal parts (white), conductive polypropylene duct connection. Approved in accordance with EN 61340-5-1.



ATEX (EX): Aluminum and metal parts painted using special conductive paint (black), conductive polypropylene duct connection. Earth cable for safe grounding. Complies with the ATEX Directive 2014/34/EU category 2 gases and dust.

Ceiling bracket MTI

The ceiling bracket functions as an exhaust duct so you avoid costly external duct routing and extra drilling through the suspended ceiling. Simple, stable and clean installation. On request, MTI can be supplied in lengths exceeding 80".



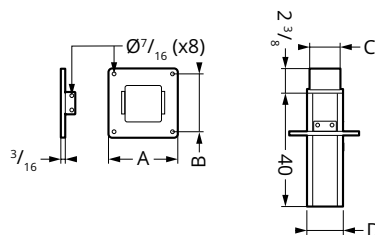
ME 50/75	Dimensions (in)					Weight (lb)			
Article	A	B	C	D	E	STD	PP	ESD	ATEX
MTI 250	Ø7 7/8	Ø7 1/16	10	Ø3 7/8	Ø4 3/16	5.1		5.1	5.5
MTI 500	Ø7 7/8	Ø7 1/16	20	Ø3 7/8	Ø4 3/16	6.6		6.6	7.1
MTI 750	Ø7 7/8	Ø7 1/16	30	Ø3 7/8	Ø4 3/16	7.9		7.9	8.4
MTI 1000	Ø7 7/8	Ø7 1/16	40	Ø3 7/8	Ø4 3/16	9.3		9.3	9.7
MTI 1250	Ø7 7/8	Ø7 1/16	50	Ø3 7/8	Ø4 3/16	11.0		11.0	11.5
MTI 1500	Ø7 7/8	Ø7 1/16	60	Ø3 7/8	Ø4 3/16	12.3		12.3	12.8
MTI 1750	Ø7 7/8	Ø7 1/16	70	Ø3 7/8	Ø4 3/16	14.1		14.1	14.6
MTI 2000	Ø7 7/8	Ø7 1/16	80	Ø3 7/8	Ø4 3/16	15.4		15.4	15.9

ME 100	Dimensions (in)					Weight (lb)			
Article	A	B	C	D	E	STD	PP	ESD	ATEX
MTI 500-125	Ø9 13/16	Ø8 11/16	20	Ø4 15/16	Ø5 1/4	4.5			10.4
MTI 750-125	Ø9 13/16	Ø8 11/16	30	Ø4 15/16	Ø5 1/4	6.7			15.2
MTI 1000-125	Ø9 13/16	Ø8 11/16	40	Ø4 15/16	Ø5 1/4	7.7			14.4
MTI 1250-125	Ø9 13/16	Ø8 11/16	50	Ø4 15/16	Ø5 1/4	8.3			18.7
MTI 1500-125	Ø9 13/16	Ø8 11/16	60	Ø4 15/16	Ø5 1/4	9.7			21.8
MTI 1750-125	Ø9 13/16	Ø8 11/16	70	Ø4 15/16	Ø5 1/4	10.6			24.0
MTI 2000-125	Ø9 13/16	Ø8 11/16	80	Ø4 15/16	Ø5 1/4	11.6			26.2

Ceiling bracket **MTF**

Ceiling bracket for mounting through e.g. floor structure with duct connection at the top. The attachment plate is adjustable along the entire length of the aluminum tube. If required, the aluminum profile can be cut during fitting.

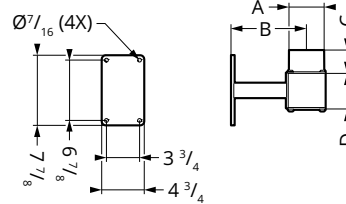
Article	Dimensions (in)				Weight (lb)			
	A	B	C	D	STD	PP	ESD	ATEX
MTF 1000 (ME 50/75)	$\varnothing 7 \frac{7}{8}$	$\varnothing 7 \frac{1}{16}$	$\varnothing 3 \frac{7}{8}$	$\varnothing 4 \frac{3}{16}$	4,4		9.7	9.9
MTF 1000-125 (ME 100)	$\varnothing 9 \frac{13}{16}$	$\varnothing 8 \frac{11}{16}$	$\varnothing 4 \frac{15}{16}$	$\varnothing 5 \frac{1}{4}$	6,4			14.3



Wall bracket **MVK**

For special orders, wall bracket length can be customized both horizontally and vertically.

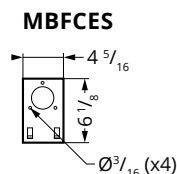
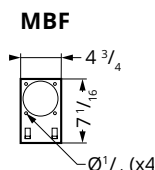
Article	Dimensions (in)				Weight (lb)			
	A	B	C	D	STD	PP	ESD	ATEX
MVK (ME 50/75)	$\varnothing 3 \frac{7}{8}$	$8 \frac{5}{8}$	$2 \frac{9}{16}$	$4 \frac{1}{8}$	2,3		5.1	5.1
MVK-125 (ME 100)	$\varnothing 4 \frac{15}{16}$	$9 \frac{1}{8}$	$2 \frac{3}{8}$	$5 \frac{7}{8}$	2,6			6.0



Flexible table bracket **MBF**

Flexible bracket for attachment to a tabletop or shelf. Supplied complete with two screw clamps. Also available in ESD/ATEX version.

Article	Weight (lb)			
	STD	PP	ESD	ATEX
MBF			1.8	1.8
MBFCES*			1.8	



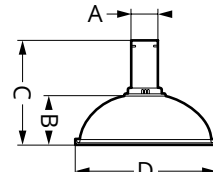
* Only suitable for MEBC 700-50ES; see table on pages 10–11 for version.

Hoods and suction nozzles

DOME HOOD MEK

Suitable for gases with high lift, completely or partially covering the contaminant source without obscuring the view. Temp. range: 5 °F to 176 °F.

Model	Material	Color
STD:	PMMA	Transparent
PP:	PP	Transparent
ESD/ATEX:	PE (dissipative)	Black

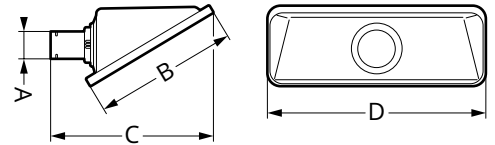


Article	Dimensions (in)				Weight (lb)			
	A	B	C	D	STD	PP	ESD	ATEX
MEK 350-50	Ø2	5 5/16	10 1/16	Ø13 1/4	1.1		1.3	
MEK 350-75	Ø3	4 3/4	10 1/16	Ø13 1/4	1.1	0.9	1.3	1.3
MEK 351-100	Ø4	4 5/16	11 5/8	Ø13 1/4	1.5	1.1		1.3
MEK 500-100	Ø4	7 1/16	14 3/16	Ø19 11/16	2.4	1.8		2.2

SQUARE HOOD MESH

Suitable for positioning above gases with high lift or adjacent to the work surface for contaminants with no lift or low lift. All without obstructing the work. Temp. range: 5 °F to 176 °F.

Model	Material	Color
STD:	PETG	Transparent

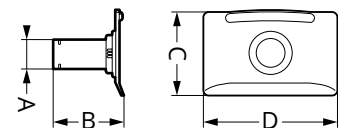


Article	Dimensions (in)				Weight (lb)			
	A	B	C	D	STD	PP	ESD	ATEX
MESH 350-50	Ø2	12 3/16	15 3/4	14 3/16	1.3			
MESH 350-75	Ø3	12 3/16	15 3/4	14 3/16	1.5			
MESH 500-100	Ø4	18 1/2	23 1/4	22 1/16	2.9			

FLAT SCREEN HOOD MEPH

Designed to maximize the work area without obscuring the object from the user. The flat screen hood gives the best suction effect for table and bench work. Temp. range: 5 °F to 176 °F.

Model	Material	Color
STD:	PETG	Transparent
PP:	PP	Transparent
ESD/ATEX:	PE (dissipative)	Black



Article	Dimensions (in)				Weight (lb)			
	A	B	C	D	STD	PP	ESD	ATEX
MEPH 300-50	Ø2	5 7/8	7 11/16	11 13/16	0.7		0.7	
MEPH 300-75	Ø3	5 7/8	7 11/16	11 13/16	0.9	0.7	0.7	0.7
MEPH 375-100	Ø4	7 7/8	9 13/16	14 3/4	1.3	0.9		1.1

METAL HOOD MEM

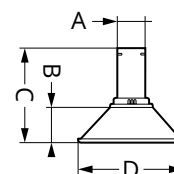
For work in harsher environments. Capture of hot gases, dust and similar. Can be fitted with work lighting* (MEMB). Temp. range: 5 °F to 176 °F.

Model	Material	Color
STD/PP:	Al	White
ESD/ATEX:	Al	Black

MEMB - Technical data						
Output:	5 W	at	350 mA		
Light flux:	100 lm				
Color temperature:	4,000 K				

* Only suitable for ME STD/PP.

Article	Dimensions (in)				Weight (lb)			
	A	B	C	D	STD	PP	ESD	ATEX
MEM 250-50	Ø2	2 3/4	8 7/16	Ø9 13/16	0.7		0.7	
MEM 250-75	Ø3	2 3/4	8 7/16	Ø9 13/16	0.9	0.7	0.7	0.7
MEM 251-100	Ø4	3 9/16	10 1/4	Ø9 13/16	1.3			1.1

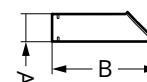


SUCTION NOZZLE MES

For harsh environments and for getting close to the source of contamination without disrupting the work. Temp. range: 5 °F to 176 °F.

Model	Material	Color
STD:	Al	None
PP:	PP	White
ESD/ATEX:	PE (dissipative)	Black

Article	Dimensions (in)		Weight (lb)			
	Ø	A	STD	PP	ESD	ATEX
MES 300-50	Ø2	8 7/8	0.2		0.2	
MES 300-75	Ø3	8 7/8	0.4	0.2	0.2	0.2
MES 300-100	Ø4	8 7/8	0.7			

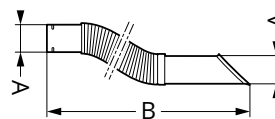


FLEXIBLE SUCTION NOZZLE MEFS

Designed to maximize mobility and flexibility without compromising on efficiency. Temp. range: 5 °F to 176 °F.

Model	Material	Color
ESD:	ABS/PS (dissipative)	Black

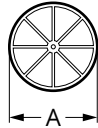
Article	Dimensions (in)		Weight (lb)			
	A	B	STD	PP	ESD	ATEX
MEFS 600-50ES	Ø2	23 5/8			0.9	
MEFS 600-75ES	Ø3	23 5/8			1.1	



Accessories

PROTECTIVE GRILLE **MESG**

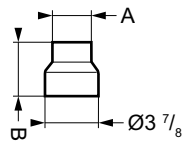
Stainless steel protective grille (EN 1.4436, AISI/UNS 316) to prevent objects from being sucked into the system. Fitted to joints. Temp. range: 5 °F to 176 °F.



Article	Dimensions (in)		Version			
	A		STD	PP	ESD	ATEX
MESG-50	Ø3 9/16		●		●	
MESG-75	Ø4 7/16		●		●	●
MESG-100	Ø6 7/16		●			●

REDUCING SLEEVE **MRM***

Polypropylene reducer, suitable for Ø4" standard attachment, for reducing down to Ø2 3/8".

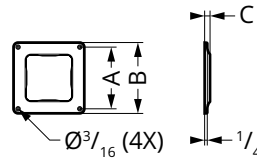


Article	Dimensions (in)		Version			
	A	B	STD	PP	ESD	ATEX
MRM 100-50	Ø2	3 9/16	●	●	●	●
MRM 100-75	Ø3	2 3/8	●	●	●	●

* Only suitable for ME 50/75

COVER PLATE **MCT**

Polypropylene cover plate for stylish installation, used together with MTI ceiling bracket for stabilisation and to cover lead throughs in suspended ceilings.



Article	Dimensions (in)			Version			
	A	B	C	STD	PP	ESD	ATEX
MCT	Ø5 13/16	Ø6 11/16	1/2	●	●	●	●
MCT-125	Ø7 3/8	Ø8 3/8	9/16	●	●	●	●

Delivery version

Supplied assembled for easy installation.
Hood and bracket ordered separately.

Always choose a low pressure drop

A low pressure drop always saves energy. A low pressure drop also produces less noise, reduces the risk of annoying ventilation sounds and can more easily be combined with other extractors in the same system.

EXTRACTION ARMS · VEHICLE EXHAUST EXTRACTION · FANS · FILTERS · CURTAINS · CONTROLS

MOVEX

104 Commerce Drive, Northampton, PA 18067, USA • Tel: 610-440-0478 • Fax: 610-440-0480 • Email: info@movexinc.com

www.movexinc.com